

Lifeline Cell Technology Certificate of Analysis

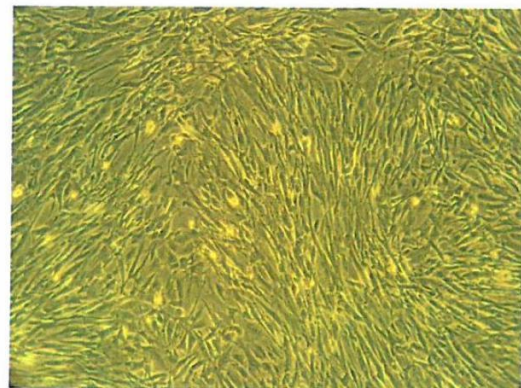
Product Name: Human Prostate Smooth Muscle Cells
Catalog Number: FC-0100
Product Description: Cryopreserved human smooth muscle cells derived from Prostate tissue. Prostate Smooth Muscle cells are cryopreserved in P3, after isolation from tissue cells are cultured for three passages and then cryopreserved. Vials contain 500,000 cells in one ml cryopreservation solution.
Product Lot Number: 06994
Manufacture Date: APR2018
Expiration Date: Not applicable when stored at or below -150° C

Product Information

Donor Demographics: Sex: Male Tissue Source: Prostate Age: 16 years
 Race: Caucasian Cause of Death: Head Trauma (GSW)
 Recommended Culture Medium: VascuLife[®], LM-0002 supplemented with:
 VascuLife SMC LifeFactors[®] Kit, LS-1040

Test	Specifications	Results
Sterility Test (bacteria, yeast and fungi)	negative	negative
Sterility Test, mycoplasma	negative	negative
PCR virus testing:		
Hepatitis B	negative	negative
Hepatitis C	negative	negative
HIV-1 & HIV-2	negative	negative
Viable Cell Count:	≥500,000	1,215,000 cells/ml
Viability (by Trypan Blue Exclusion):	>70% viable	82.9% viable
Cell Growth in DermaLife		
Population Doubling capacity	>15 doublings	16.15 doublings
Cell morphology	normal	normal
Characterization		
Smooth muscle α-actin	positive	positive
Von Willebrand Factor	negative	negative

Picture of P₅ Bladder Smooth Muscle Cells lot# 06994 cultured in VascuLife SMC Complete Medium, day 7 in culture from an inoculation of 2,500 cells/cm².



Quality Control Jeremy Hammond June 11, 2018

Jeremy Hammond, QC Director Lifeline Cell Technology

To place an order call Lifeline technical and customer service at (877) 845-7787 or you may submit an order form by fax to (443) 393-0393. Order form available on line at www.lifelinecelltech.com/order.