

Lifeline Cell Technology Certificate of Analysis

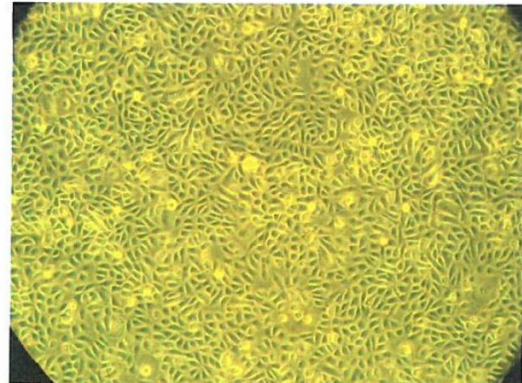
Product Name: Human Bladder Epithelial Cells, Dome
Catalog Number: FC-0079
Product Description: Cryopreserved human epithelial cells from the Dome region of the bladder. Bladder epithelial cells, dome are cryopreserved in P2, after isolation from tissue cells are cultured for two passages and then cryopreserved. Vials contain 500,000 cells in one ml cryopreservation solution.
Product Lot Number: 05972
Manufacture Date: JAN2017
Expiration Date: Not applicable when stored at or below -150° C

Product Information

Donor Demographics:Sex: Female Tissue Source: Bladder (Dome) Age: 3 years
 Race: Hispanic Cause of Death: Anoxia (2° to Seizure)
 Recommended Culture Medium:.....UroLife D Complete Medium, LM-0042

Test	Specifications	Results
Sterility Test (bacteria, yeast and fungi)	negative	negative
Sterility Test, mycoplasma	negative	negative
PCR virus testing:		
Hepatitis B	negative	negative
Hepatitis C	negative	negative
HIV-1 and HIV-2	negative	negative
Viable Cell Count:	≥500,000 cells/ml	997,500 cells/ml
Viability (by Trypan Blue Exclusion):	>70% viable	78.9 % viable
Cell Growth:		
Population Doubling capacity	>15 doublings	15.51 doublings
Cell morphology	normal	normal

Picture of P₄ Bladder Epithelial Cells (Dome) lot 04101 cultured in UroLife D Complete Medium, day 5 in culture from an inoculation of 3,000 cells/cm².



Quality Control Jeremy Hammond March 15, 2017

Jeremy Hammond, QC Director Lifeline Cell Technology

To place an order call Lifeline technical and customer service at (877) 845-7787 or you may submit an order form by fax to (443) 393-0393. Order form available on line at www.lifelinecelltech.com/order.