

Lifeline Cell Technology Certificate of Analysis

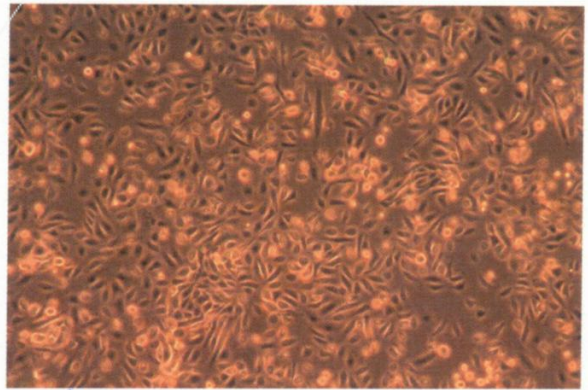
**Product Name:** Renal Cortical Epithelial Cells  
**Catalog Number:** FC-0012  
**Product Description:** Cryopreserved human renal cortical epithelial cells. Vials contain 500,000 cells in one ml cryopreservation solution.  
**Product Lot Number:** 00988  
**Manufacture Date:** OCT2009  
**Expiration Date:** Not applicable when stored at -196° C

**Product Information**

Donor Demographics: ..... Sex: Female Tissue Source: Kidney Age: 12 years  
 Race: Hispanic Cause of Death: Anoxia  
 Medical History: Dandy-Walker Malformation  
 Recommended Culture Medium: ..... Renal Epithelial Cell Basal Medium, LM-0010, supplemented with Renal Epithelial Cell Growth Kit, LS-1048

Test	Specifications	Results
Sterility Test, bacteria and yeast	negative	negative
Sterility Test, mycoplasma	negative	negative
PCR virus testing:		
Hepatitis B	negative	negative
Hepatitis C	negative	negative
HIV-1 & HIV-2	negative	negative
Viable Cell Count:	≥500,000 cells/ml	845,000 cells/ml
Viability (by Trypan Blue Exclusion):	>50% viable	95% viable
Cell Growth in DermaLife		
Population Doubling capacity	>15 doublings	15.13 doublings
Cell morphology	normal	normal

Picture of P<sub>3</sub> Renal Cortical Epithelial Cells lot 00988 cultured in Renal Epithelial Cell Growth Medium, day 5 in culture from an inoculation of 5,000 cells/cm<sup>2</sup>.



Quality Control Jeremy Hammond February 5, 2010

Jeremy Hammond, QC Director Lifeline Cell Technology

To place an order call Lifeline technical and customer service at (877) 845-7787 or you may submit an order form by fax to (301) 845-2405. Order form available on line at [www.lifelinecelltech.com/order](http://www.lifelinecelltech.com/order).